



BUDGET STATUS REPORT JANUARY 31, 2024



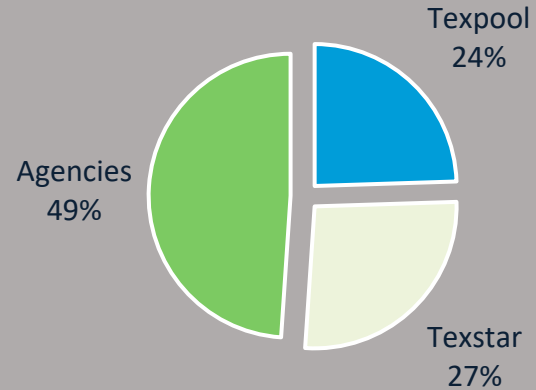
Summary Year-To-Date

| Major Funds Revenues & Expenses January 31, 2024 | | FY24 % of Budget | FY23 % of Budget | Utility Operating | FY24 % of Budget | FY23 % of Budget |
|---|----------------|------------------------|------------------------|-------------------|------------------------|------------------------|
| Revenue Budget | \$ 262,222,397 | | | \$ 152,056,450 | | |
| YTD Actual | 150,314,517 | 57% | 59% | 49,947,584 | 33% | 32% |
| Expense Budget | 272,903,510 | | | 144,859,855 | | |
| YTD Spent | 68,666,569 | 25% | 27% | 41,073,642 | 28% | 24% |
| Revenues Over (Under) Expenses | \$ 81,647,949 | | | \$ 8,873,942 | | |

FY24

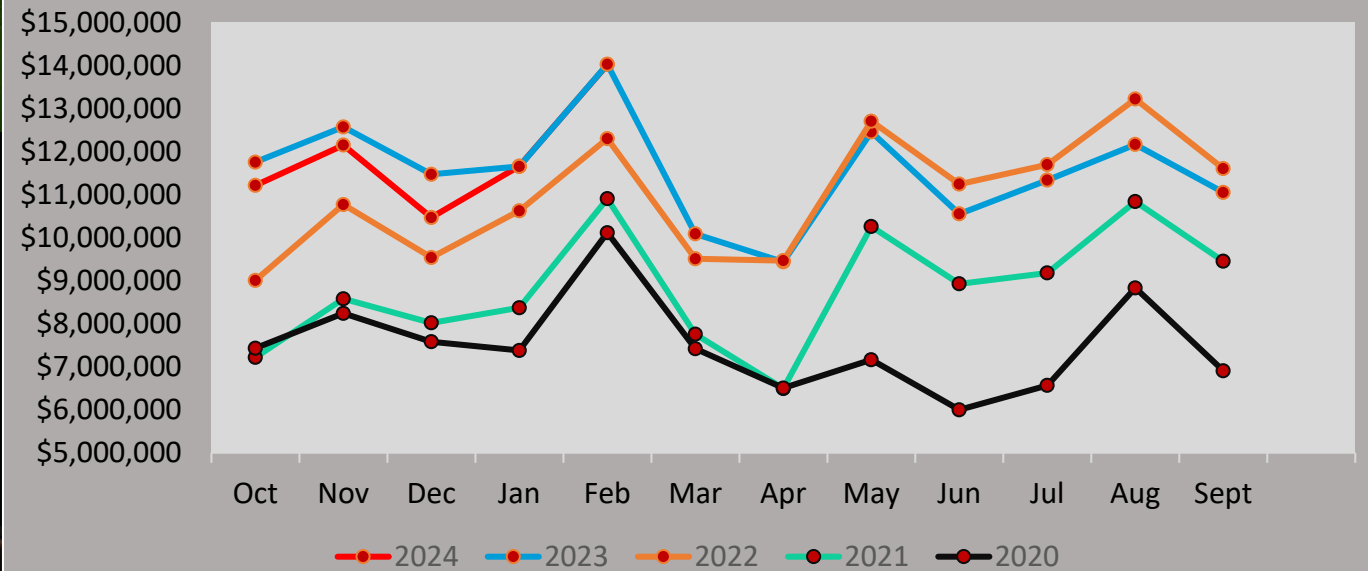


Investment Portfolio



| City Portfolio | Balances | Yields |
|----------------|------------------|---------|
| Texpool | \$ 314,298,606 | 5.3455% |
| Texstar | \$ 341,008,394 | 5.3200% |
| Agencies | \$ 627,950,000 | 5.1690% |
| Totals | \$ 1,283,257,000 | |

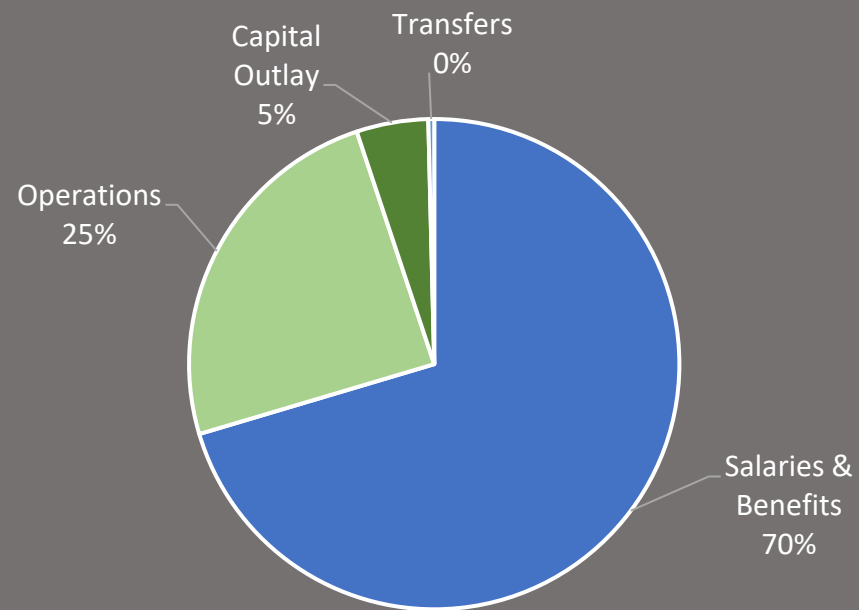
Sales Tax Collections by Fiscal Year



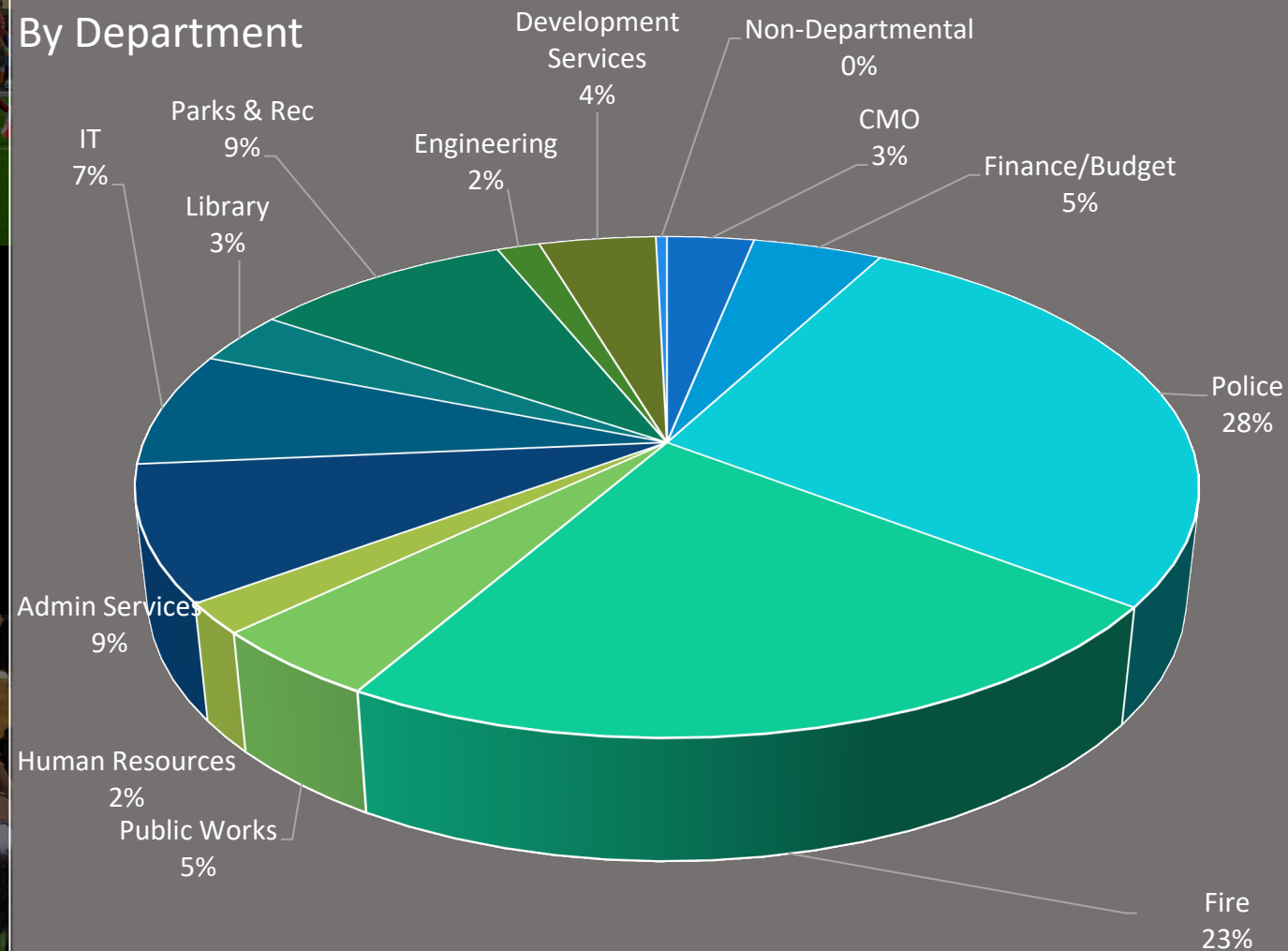
FY24



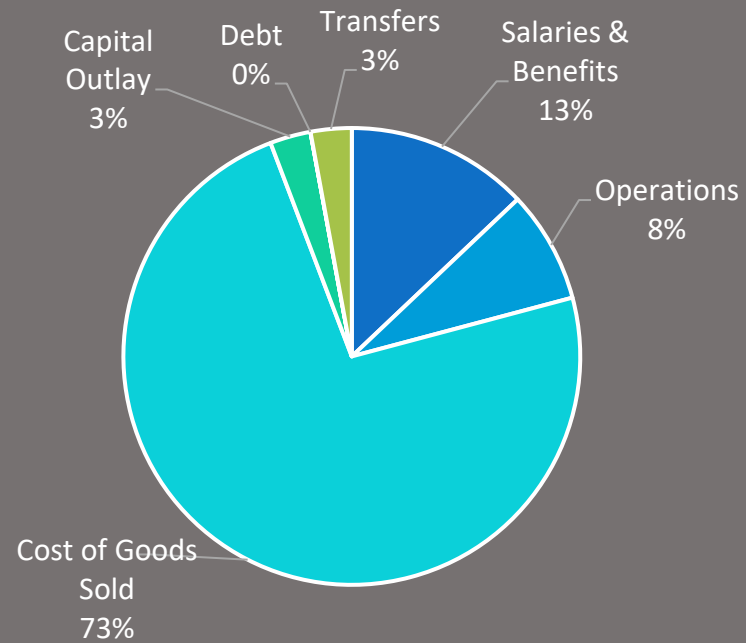
General Fund Expenditures By Category



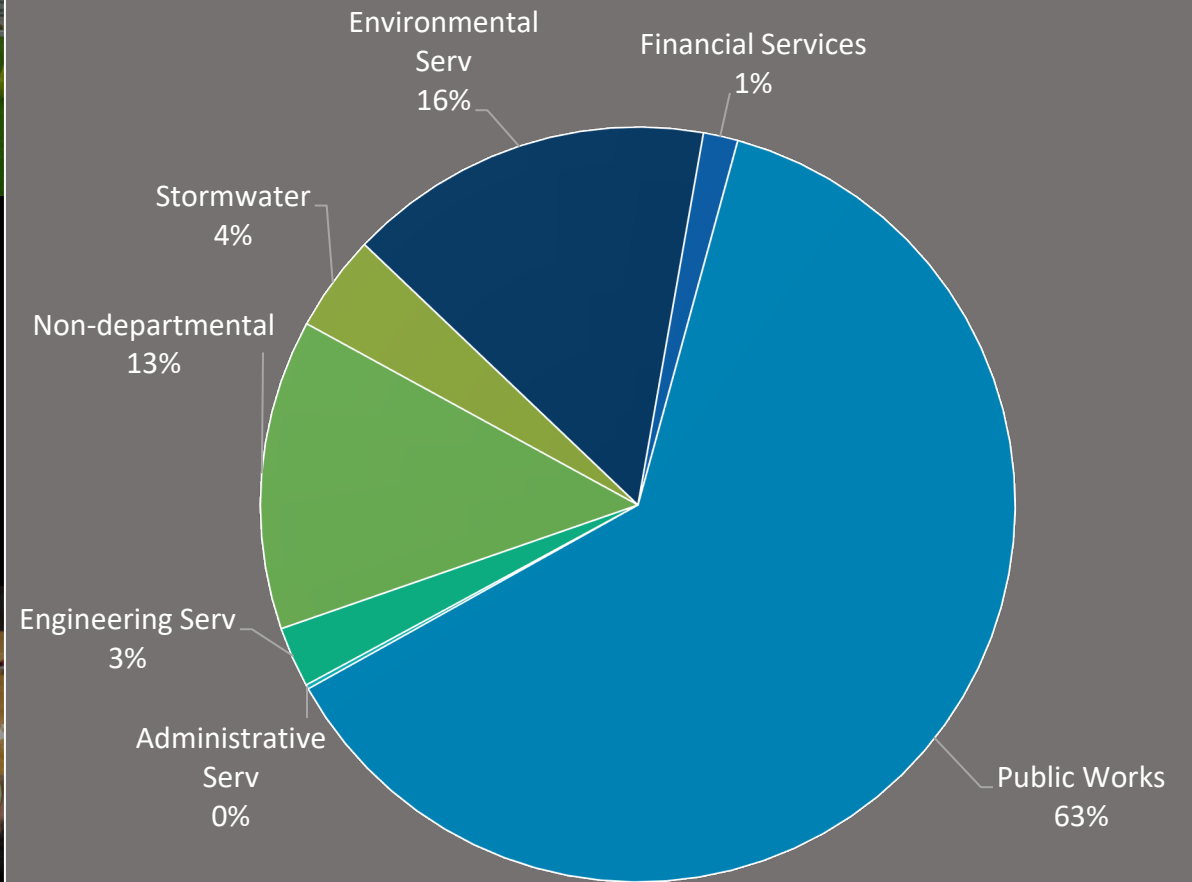
General Fund Expenditures By Department



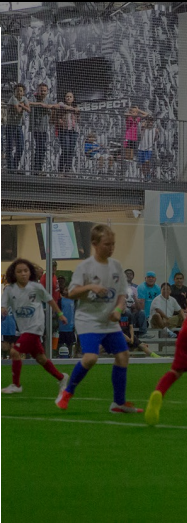
Enterprise Funds By Expense Category



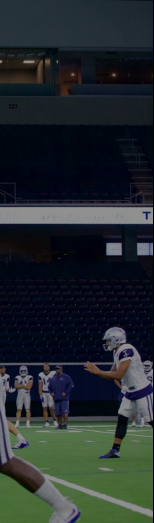
Enterprise Funds Expenses by Department



| Payables Process Activity | Monthly Activity |
|----------------------------------|------------------|
| # accounts payable invoices paid | 4,678 |
| # payroll advices | 3,018 |
| | |



| Municipal Court | Monthly Activity |
|-----------------------------|------------------|
| # of cases filed | 1,068 |
| # of cases closed | 1,216 |
| # warrants issued/cleared | 167/254 |
| % of on-line/phone payments | 61% |



| Revenue Collections | Monthly Activity Jan 24 | Monthly Activity Jan 23 | % Change |
|-----------------------------|-------------------------|-------------------------|----------|
| # of active customers | 67,332 | 66,010 | 2.0% |
| # new meter sets | 104 | 82 | 26.9% |
| # new customers | 248 | 115 | 115.7% |
| # online pay/% of total pay | 30,620/46% | 22,342/34% | 37.1% |

