

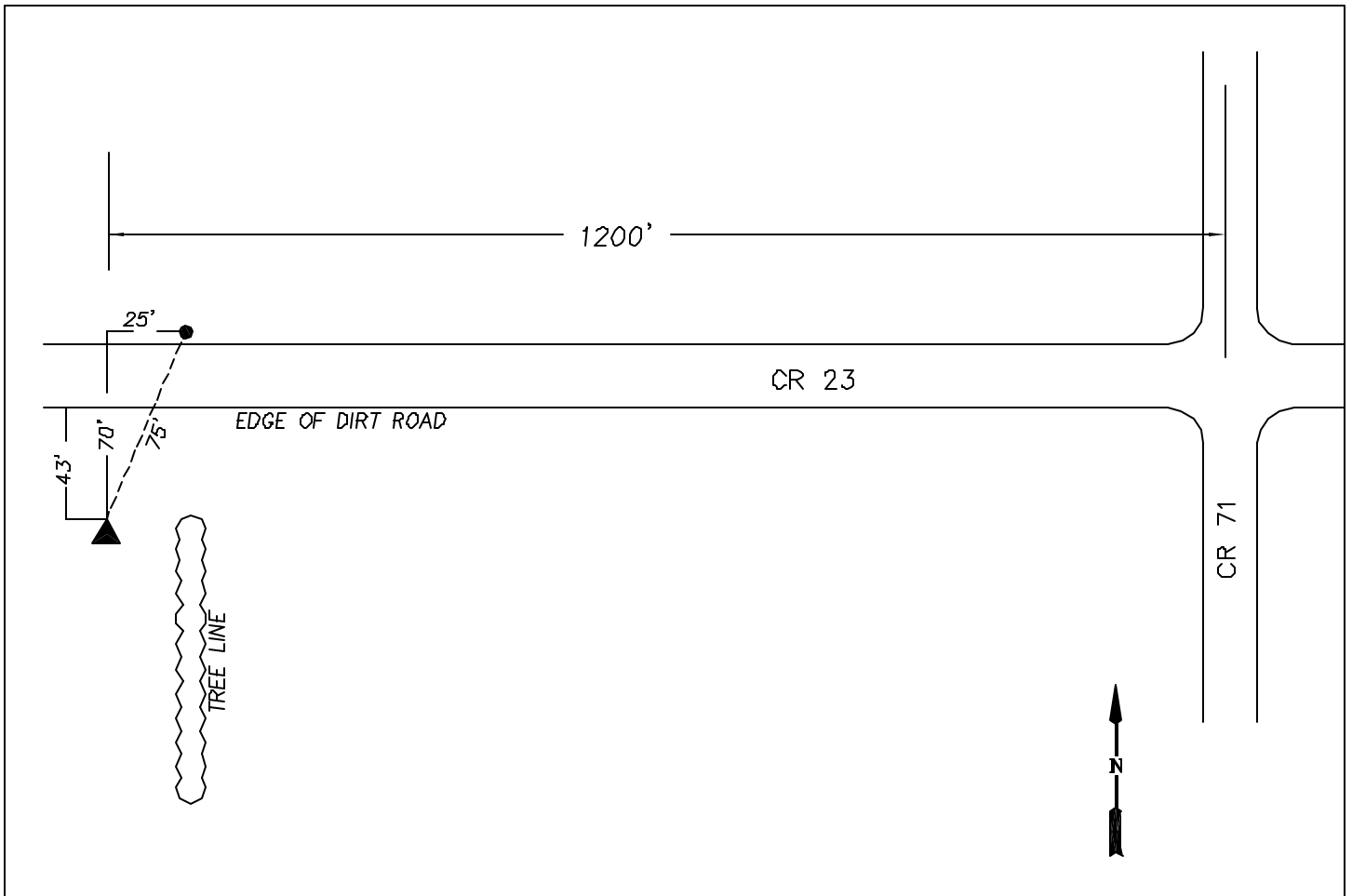




STATION NUMBER 1			
STATE PLANE COORDINATES NAD '83 TEXAS NORTH CENTRAL (GRID VALUES)		GEODETIC POSITION	
NORTH : 7105431.40		LATITUDE : 33° 09' 00.28053" N	
EAST : 2480882.46		LONGITUDE : 96° 49' 32.61701" W	
ORTHO ELEV. : 674.24			
DESCRIPTION :			
Standard City of Frisco monument located in the center island of the City of Frisco – City Hall parking lot. This station is 54' south west of a light pole situated on the north side of the parking lot, 47' north west of a light pole on the south side of the parking lot, and 2' east of the west back of curb of the center island. City hall is located at the corner of 4th St. and Main St.			
GRID AZIMUTH :		 CITY OF FRISCO, TEXAS	
Grid azimuth to center of Downtown Frisco water tower, azimuth mark "A" from station #1: 101°03'25"			
(see "Azimuth Mark Sketches" for details)			
		DRAWN BY: MAS	
		APPROVED BY: JLL	
		JOB NUMBER: 34034-0020	
		DATE: 5/2002	
		SHEET 1 OF X	



STATION NUMBER      3			
STATE PLANE COORDINATES NAD '83 TEXAS NORTH CENTRAL (GRID VALUES)  NORTH :    7093195.78 EAST :    2498726.44 ORTHO ELEV. :    761.33		GEODETIC POSITION  LATITUDE :    33° 06' 56.36294" N LONGITUDE :    96° 46' 05.12044" W	
DESCRIPTION:  Standard City of Frisco monument in the center median of Coit Rd., just south of Lebanon Rd. at the intersection of Coit Rd. and Lebanon Rd. The monument is located 39' south of the northern most back of curb of this center median, 10' east of the west back of curb of this median, and 14' west of the east back of curb.			
GRID AZIMUTH :  Grid azimuth to the top of the southernmost edge of northernmost Frisco water tower, azimuth mark "F" from station #3: 262°50'08"  (see "Azimuth Mark Sketches" for details)		<div>CITY OF FRISCO, TEXAS</div> <div><div><div>DRAWN BY: MAS</div><div>APPROVED BY: JLL</div></div><div><div>JOB NUMBER: 34034-0020</div><div>DATE: 5/2002</div><div>SHEET 3 OF X</div></div></div>	



STATION NUMBER 5

STATE PLANE COORDINATES NAD '83  
TEXAS NORTH CENTRAL  
(GRID VALUES)

NORTH : 7119841.671  
EAST : 2496980.565  
ELEV. : 789.326

GEODETC POSITION

LATITUDE : 33° 11' 20.27121" N  
LONGITUDE : 96° 46' 20.49397" W

DESCRIPTION :

Standard City of Frisco monument approximately 1200' west of CR 71 on CR23. The monument is 75' to the southwest of a power pole on the north side of CR 23, and 43' south of the south edge of dirt road of CR 23.

GRID AZIMUTH :



CITY OF FRISCO, TEXAS

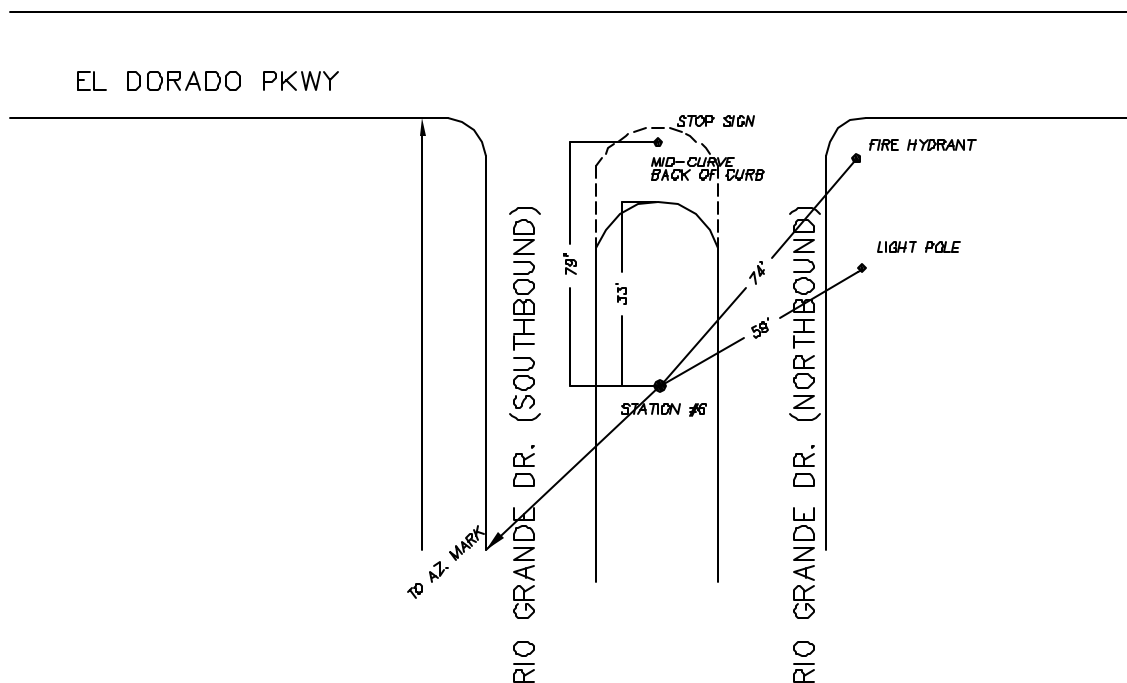
DRAWN BY:  
MAS

APPROVED BY:  
JLL

JOB NUMBER:  
34034-0020

DATE:  
5/2002

SHEET 5 OF X



# STATION NUMBER 6

STATE PLANE COORDINATES NAD '83  
TEXAS NORTH CENTRAL  
(GRID VALUES)

NORTH : 7115305.32  
EAST : 2464436.90  
ORTHO ELEV. : 584.22

GEODETIC POSITION

LATITUDE : 33° 10' 40.52225" N  
LONGITUDE : 96° 52' 44.25009" W

## DESCRIPTION :

Standard City of Frisco monument located just south of the intersection of El Dorado Pkwy and Rio Grande Dr. This monument is in the center median of Rio Grande Dr., and is located 33' south of the northern most back of curb at the mid-curve, 74' southwest of a fire hydrant, 59' southwest of a light pole, and 79' south of a stop sign.

## GRID AZIMUTH :

Grid azimuth to the easternmost edge of a red & white relay tower, azimuth mark "B" from station #6: 200°56'01"

(see "Azimuth Mark Sketches" for details)



CITY OF FRISCO, TEXAS

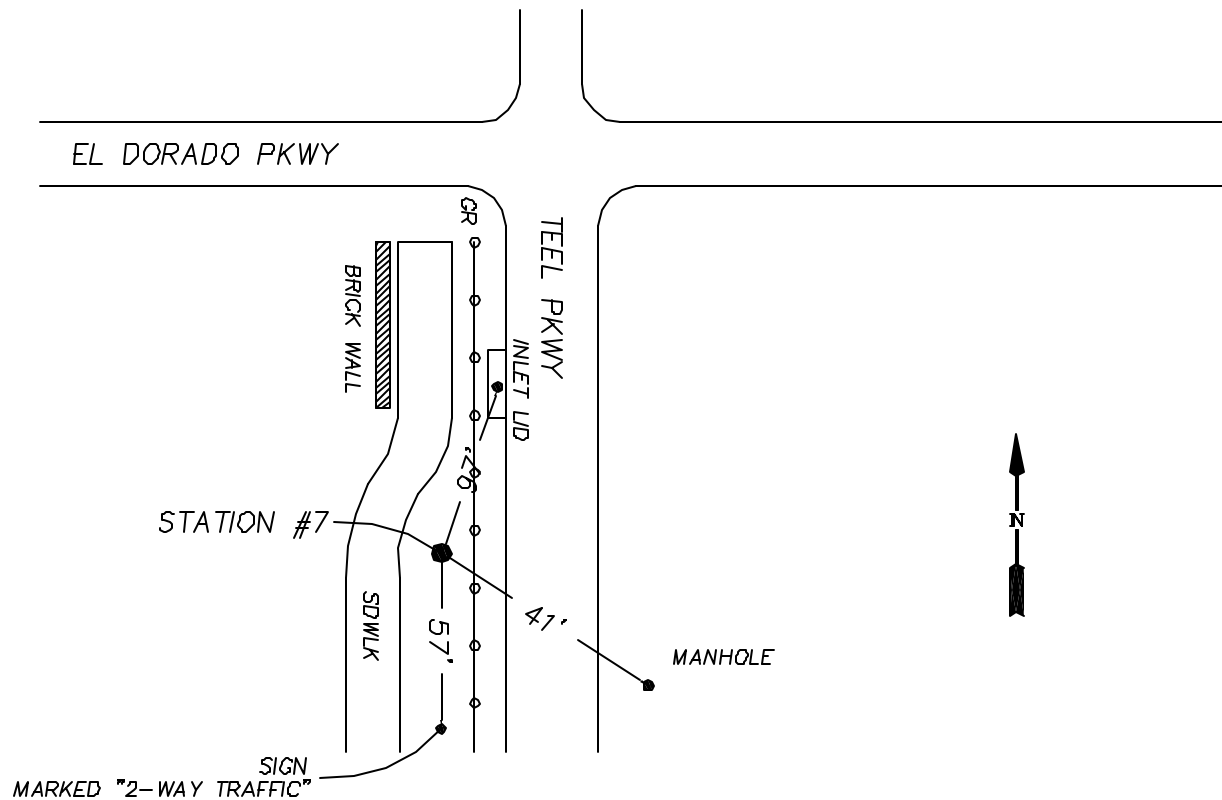
DRAWN BY:  
MAS

APPROVED BY:  
JLL

JOB NUMBER:  
34034-0020

DATE:  
5/2002

SHEET 6 OF X



STATION NUMBER 7

STATE PLANE COORDINATES NAD '83  
TEXAS NORTH CENTRAL  
(GRID VALUES)

NORTH : 7115207.21  
EAST : 2468381.98  
ORTHO ELEV. : 589.43

GEODETC POSITION

LATITUDE : 33° 10' 38.94693" N  
LONGITUDE : 96° 51' 57.85326" W

DESCRIPTION :

Standard City of Frisco monument located between a sidewalk and a guard rail on the west side of Teel Pkwy just south of the intersection of Teel Pkwy and El Dorado Pkwy. The monument is 97' south of an inlet lid, 57' north of a traffic sign, and 41' northwest of a manhole.

GRID AZIMUTH :



CITY OF FRISCO, TEXAS

DRAWN BY:  
MAS

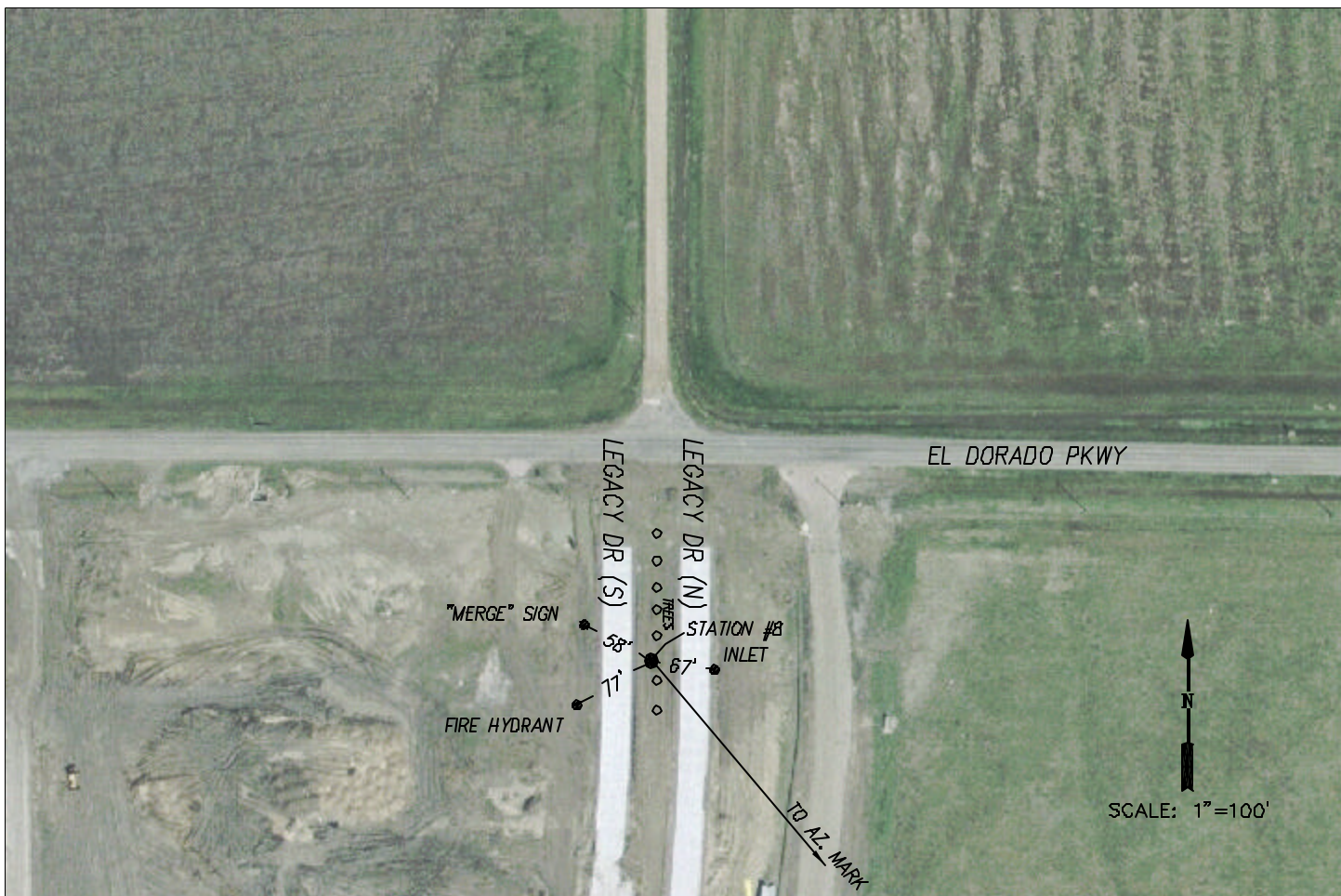
APPROVED BY:  
JLL


JOB NUMBER:  
34034-0020

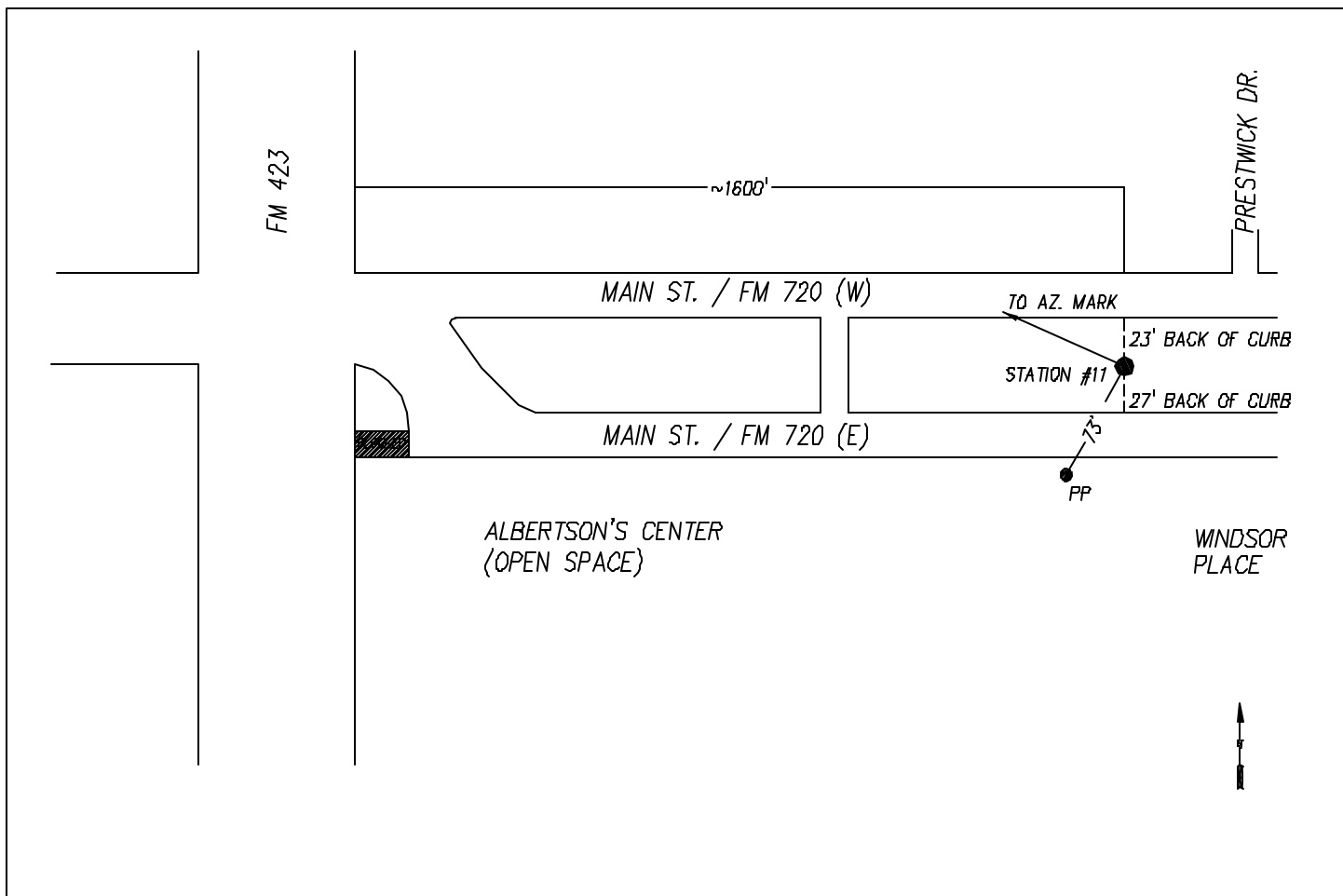
DATE:  
5/2002

SHEET 7 OF X





STATION NUMBER     8			
STATE PLANE COORDINATES NAD '83 TEXAS NORTH CENTRAL (GRID VALUES)		GEODETIC POSITION	
NORTH :    7114198.85 EAST :    2474355.53 ORTHO ELEV. :    611.41		LATITUDE :    33° 10' 28.0457" N LONGITUDE :    96° 50' 47.76037" W	
DESCRIPTION :			
Standard City of Frisco monument located in the center median of Legacy Dr. just south of the intersection of Legacy Dr. and El Dorado Pkwy. The monument is located 77' northeast of a fire hydrant, 67' west of an inlet lid, and 58' southeast of a traffic sign.			
GRID AZIMUTH :		<div>CITY OF FRISCO, TEXAS</div>	
Grid azimuth to ball on Downtown Frisco water tower, azimuth mark "A" from station #8: 139°40'11"		DRAWN BY: MAS	
(see "Azimuth Mark Sketches" for details)		APPROVED BY: JLL	
		JOB NUMBER: 34034-0020	DATE: 5/2002
		SHEET 8 OF X	



STATION NUMBER 11

STATE PLANE COORDINATES NAD '83  
TEXAS NORTH CENTRAL  
(GRID VALUES)

NORTH : 7106340.54  
EAST : 2462601.54  
ORTHO ELEV. : 592.51

GEODETIC POSITION

LATITUDE : 33° 09' 12.10668" N  
LONGITUDE : 96° 53' 07.4648" W

DESCRIPTION :

Standard City of Frisco monument located in the center median of FM 720 approximately 1600' east of FM 423. This monument is 24' south of the north back of curb of the center median, 27' north of the south back of curb of the center median, and 73' northeast of a power pole.

GRID AZIMUTH :

Grid azimuth to the southernmost edge of a red & white relay tower, azimuth mark "B" from station #11: 293°59'51"

(see "Azimuth Mark Sketches" for details)



CITY OF FRISCO, TEXAS

DRAWN BY:  
MAS

APPROVED BY:  
JLL

JOB NUMBER:  
34034-0020

DATE:  
5/2002

SHEET 11 OF X



STATION NUMBER 12

STATE PLANE COORDINATES NAD '83  
TEXAS NORTH CENTRAL  
(GRID VALUES)

NORTH : 7106288.15  
EAST : 2493538.85  
ORTHO ELEV. : 773.97

GEODETTIC POSITION

LATITUDE : 33° 09' 06.7364" N  
LONGITUDE : 96° 47' 03.5958" W

DESCRIPTION :

Standard City of Frisco monument located in the center median of Hillcrest Rd. at the intersection of FM 720 and Hillcrest Rd. The monument is located 8' west of a traffic sign, 8' east of the west back of curb of the center median, 141' north of the southern most back of curb of the center median, and 101' northeast of an inlet lid.

GRID AZIMUTH :



CITY OF FRISCO, TEXAS

DRAWN BY:  
MAS

APPROVED BY:  
JLL

JOB NUMBER:  
34034-0020

DATE:  
5/2002

SHEET 12 OF X





STATION NUMBER 14

STATE PLANE COORDINATES NAD '83  
TEXAS NORTH CENTRAL  
(GRID VALUES)

NORTH : 7101531.45  
EAST : 2509268.99  
ORTHO ELEV. : 690.92

GEODETTIC POSITION

LATITUDE : 33° 08' 17.0958" N  
LONGITUDE : 96° 43' 59.5265" W

DESCRIPTION :

Standard City of Frisco monument located just north of Rolater Dr. in the center median of Custer Rd. at the intersection of Rolater Dr. and Custer Rd. The monument is located 13' east of the west back of curb of the center median, 29' east of the west back of curb of the center median, and 122' north of the southern most back of curb of the center median.

GRID AZIMUTH :

Grid azimuth to top of the east edge of a City of Allen water tower, azimuth mark "H" from station #14: 178°25'51"

(see "Azimuth Mark Sketches" for details)



CITY OF FRISCO, TEXAS

DRAWN BY:  
MAS


APPROVED BY:  
JLL

JOB NUMBER:  
34034-0020

DATE:  
5/2002

SHEET 14 OF X



STATION NUMBER 15			
STATE PLANE COORDINATES NAD '83 TEXAS NORTH CENTRAL (GRID VALUES)		GEODETIC POSITION	
NORTH : 7106856.84		LATITUDE : 33° 09' 09.7927" N	
EAST : 2509210.10		LONGITUDE : 96° 43' 59.1656" W	
ORTHO ELEV. : 711.75			
DESCRIPTION :			
Standard City of Frisco monument located just north of FM 720 in the center median of Custer Dr. at the intersection of FM 720 and Custer Dr. The monument is located 57' south of an inlet lid, 130' north of a traffic sign, 32' west of the east back of curb of the center median, and 12' east of the west back of curb of the center median.			
GRID AZIMUTH :			
Grid azimuth to the top of the southernmost edge of a water tower, azimuth mark "G" from station #15: 47°22'19"		CITY OF FRISCO, TEXAS	
(see "Azimuth Mark Sketches" for details)		DRAWN BY: MAS	
		APPROVED BY: JLL	
		JOB NUMBER: 34034-0020	DATE: 5/2002
		SHEET 15 OF X	



STATION NUMBER 16

STATE PLANE COORDINATES NAD '83  
TEXAS NORTH CENTRAL  
(GRID VALUES)

NORTH : 7097242.38  
EAST : 2509328.15  
ORTHO ELEV. : 660.41

GEODETC POSITION

LATITUDE : 33° 07' 34.65173" N  
LONGITUDE : 96° 43' 59.67904" W

DESCRIPTION :

Standard City of Frisco monument located approximately 350' north of the intersection of S.H. 121 and Custer Rd. in the center median of Custer Rd. The monument is 83' southeast of an inlet lid, 19' east of the west back of curb of the center median, and 25' west of the east back of curb of the center median.

GRID AZIMUTH :

Grid azimuth to the center antenna rod on top of a relay tower, azimuth mark "1" from station #16: 27°59'59"

(see "Azimuth Mark Sketches" for details)



CITY OF FRISCO, TEXAS

DRAWN BY:  
MAS

APPROVED BY:  
JLL


JOB NUMBER:  
34034-0020

DATE:  
5/2002

SHEET 16 OF X





STATION NUMBER 18			
STATE PLANE COORDINATES NAD '83 TEXAS NORTH CENTRAL (GRID VALUES)		GEODETIC POSITION	
NORTH : 7094884.62		LATITUDE : 33° 07' 14.8962" N	
EAST : 2487421.70		LONGITUDE : 96° 48' 17.7080" W	
ORTHO ELEV. : 756.49			
DESCRIPTION :			
Standard City of Frisco monument located approximately 150' southeast of the intersection of Preston Rd. and Lebanon Rd. in the center median of Lebanon Rd. The monument is 30' west of a traffic sign, 52' east of an "Optic Fiber" post, 27' north of a traffic sign, 18' north of the south back of curb of the center median, and 11' south of the north back of curb of the center median.			
GRID AZIMUTH :		<div>CITY OF FRISCO, TEXAS</div> <div><b>FRISCO</b></div>	
		DRAWN BY: MAS	
		APPROVED BY: JLL	
		JOB NUMBER: 34034-0020	
		DATE: 5/2002	
		SHEET 18 OF X	



STATION NUMBER 19

STATE PLANE COORDINATES NAD '83  
TEXAS NORTH CENTRAL  
(GRID VALUES)

NORTH : 7093256.69  
EAST : 2492949.44  
ORTHO ELEV. : 731.04

GEODETC POSITION

LATITUDE : 33° 06' 57.9028" N  
LONGITUDE : 96° 47' 13.0278" W

DESCRIPTION :

Standard City of Frisco monument located approximately 250' east of the intersection of Hillcrest Rd. and Lebanon Rd. in the center median of Lebanon Rd. The monument is located 113' east of a traffic sign, 51' north of a power pole, 16' south of the north back of curb of the center median, and 16' north of the south back of curb of the center median.

GRID AZIMUTH :



CITY OF FRISCO, TEXAS

DRAWN BY:  
MAS

APPROVED BY:  
JLL


JOB NUMBER:  
34034-0020

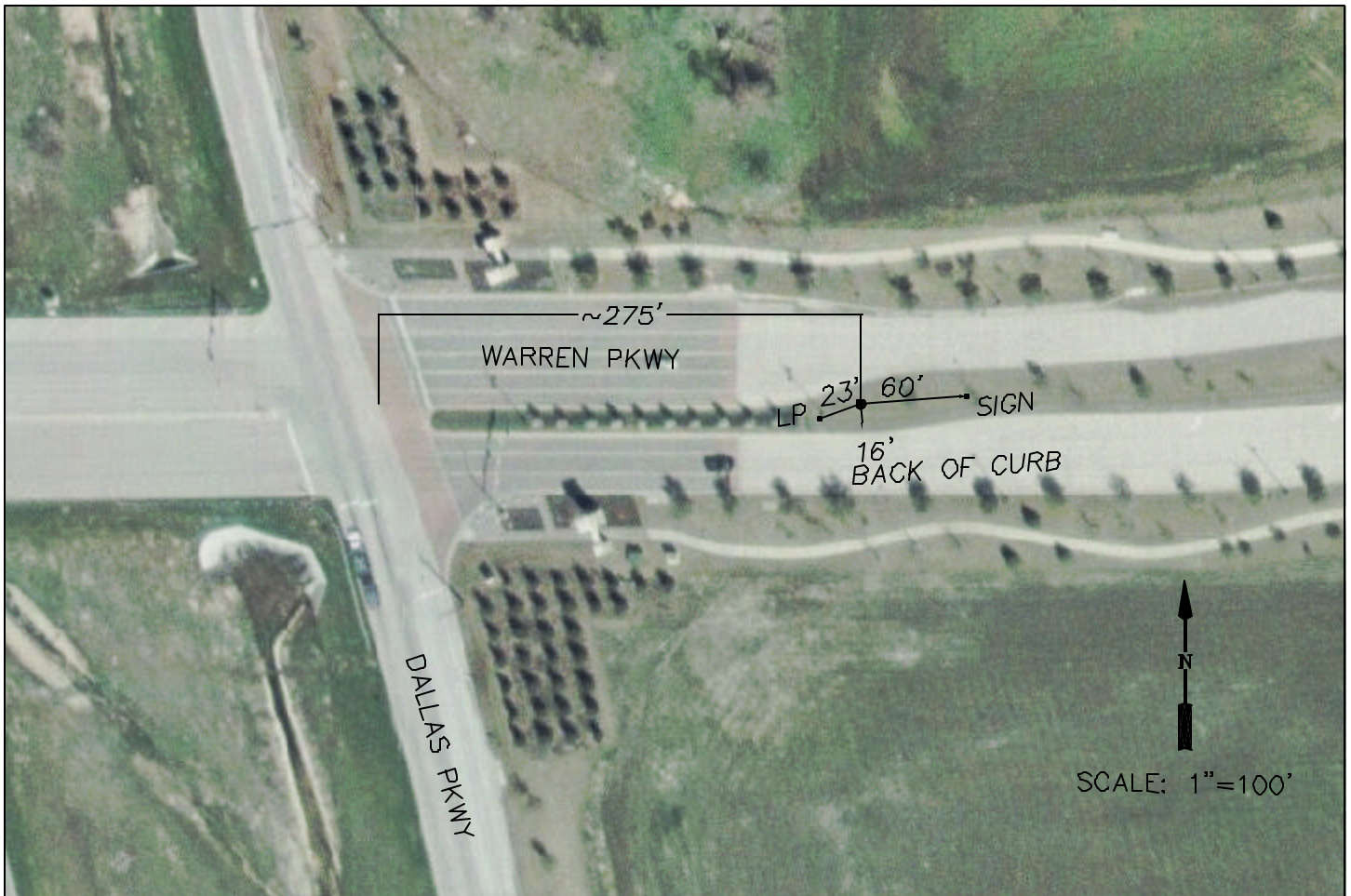
DATE:  
5/2002

SHEET 19 OF X





STATION NUMBER 20			
STATE PLANE COORDINATES NAD '83 TEXAS NORTH CENTRAL (GRID VALUES)		GEODETIC POSITION	
NORTH : 7097582.70		LATITUDE : 33° 07' 41.58530" N	
EAST : 2487452.62		LONGITUDE : 96° 48' 16.83245" W	
ORTHO ELEV. : 712.96			
DESCRIPTION :			
Standard City of Frisco monument located east of the intersection of Wade Blvd. and Preston Rd. in the center median of Wade Blvd. The monument is located 14' northeast of the northeast corner of a stone sign, 17' northwest of the northwest corner of an electrical box, and 90' to the southwest of an inlet lid.			
GRID AZIMUTH :		 CITY OF FRISCO, TEXAS <b>FRISCO</b>	
		DRAWN BY: MAS	APPROVED BY: JLL
		JOB NUMBER: 34034-0020	DATE: 5/2002
		SHEET 20 OF X	



STATION NUMBER 22

STATE PLANE COORDINATES NAD '83  
TEXAS NORTH CENTRAL  
(GRID VALUES)

NORTH : 7089647.07  
EAST : 2482348.76  
ORTHO ELEV. : 707.13

GEODETTIC POSITION

LATITUDE : 33° 06' 23.8832" N  
LONGITUDE : 96° 49' 18.3372" W

DESCRIPTION :

Standard City of Frisco monument located approximately 275' east of the intersection of Dallas Pkwy. and Warren Pkwy. in the center median of Warren Pkwy. The monument is located 23' east of a light pole, 60' west of a traffic sign, and 16' north of the south back of curb of the center median.

GRID AZIMUTH :



CITY OF FRISCO, TEXAS

DRAWN BY:  
MAS

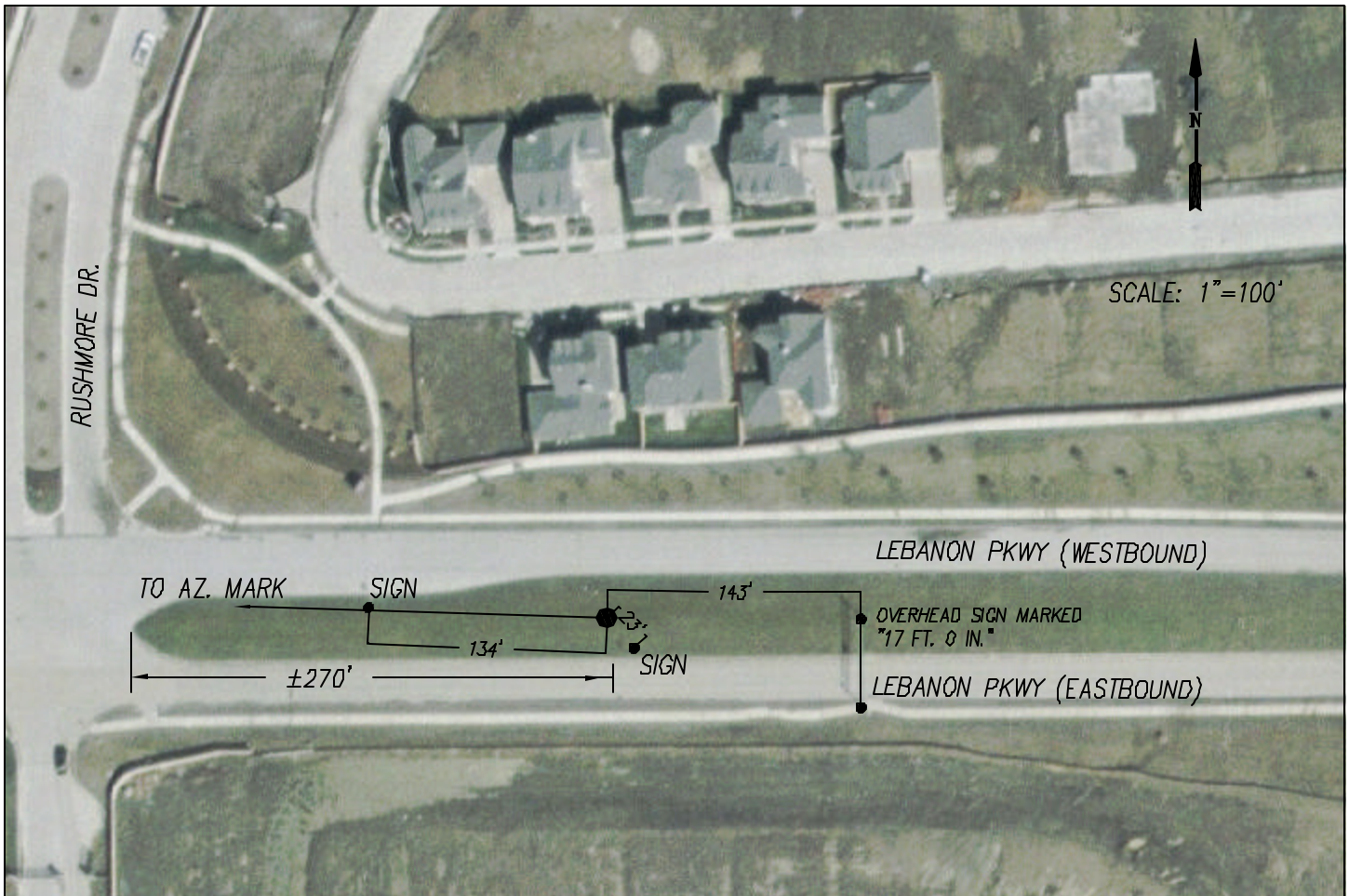
APPROVED BY:  
JLL

JOB NUMBER:  
34034-0020

DATE:  
5/2002

SHEET 22 OF X





STATION NUMBER 23

STATE PLANE COORDINATES NAD '83  
TEXAS NORTH CENTRAL  
(GRID VALUES)

NORTH : 7092552.75  
EAST : 2473493.77  
ORTHO ELEV. : 600.35

GEODETTIC POSITION

LATITUDE : 33° 06' 54.01899" N  
LONGITUDE : 96° 51' 01.89755" W

DESCRIPTION :

Standard City of Frisco monument located approximately 270' east of the intersection of Rushmore Dr. and Lebanon Pkwy. in the center median of Lebanon Pkwy. The monument is located 134' east of a traffic sign, 23' northwest of a traffic sign, and 143' east of an overhanging traffic sign.

GRID AZIMUTH :

Grid azimuth to the center of a relay tower, azimuth mark "K" from station #23:  
271°49'22"

(see "Azimuth Mark Sketches" for details)



CITY OF FRISCO, TEXAS

DRAWN BY:  
MAS


APPROVED BY:  
JLL

JOB NUMBER:  
34034-0020

DATE:  
5/2002

SHEET 23 OF X



STATION NUMBER 24			
STATE PLANE COORDINATES NAD '83 TEXAS NORTH CENTRAL (GRID VALUES)  NORTH : 7127870.10 EAST : 2484287.06 ORTHO ELEV. : 642.03		GEODETIC POSITION  LATITUDE : 33° 12' 41.74173" N LONGITUDE : 96° 48' 48.33672" W	
DESCRIPTION :  Standard City of Frisco monument located in the southeast quadrant of the intersection of CR 26 and the BNSF Railroad. The monument is located 51' to the northwest of a tree line, 34' south of the centerline of CR 26, 35' east of the east rail of the BNSF Railroad, and 48' south of a railroad sign.			
GRID AZIMUTH :  Grid azimuth to the southernmost antenna rod on southernmost visible relay tower, azimuth mark "C" from station #24: 147°13'28"  (see "Azimuth Mark Sketches" for details)		<div><div>CITY OF FRISCO, TEXAS</div></div> <div><div>DRAWN BY: MAS</div><div>APPROVED BY: JLL</div></div> <div><div>JOB NUMBER: 34034-0020</div><div>DATE: 5/2002</div><div>SHEET 24 OF X</div></div>	





STATION NUMBER 27

STATE PLANE COORDINATES NAD '83  
TEXAS NORTH CENTRAL  
(GRID VALUES)

NORTH : 7114154.69  
EAST : 2482434.37  
ORTHO ELEV. : 648.54

GEODETIC POSITION

LATITUDE : 33° 10' 26.3408" N  
LONGITUDE : 96° 46' 12.72359" W

DESCRIPTION :

Standard City of Frisco monument located in the southeast quadrant of the intersection of N. County Rd. and El Dorado Pkwy. The monument is located on the edge of a city park, and is 136' northwest of a light pole, 62' south of an inlet, 32' east of the west back of curb of El Dorado Pkwy., and 33' northeast of a tree.

GRID AZIMUTH :



CITY OF FRISCO, TEXAS

DRAWN BY:  
MAS

APPROVED BY:  
JLL

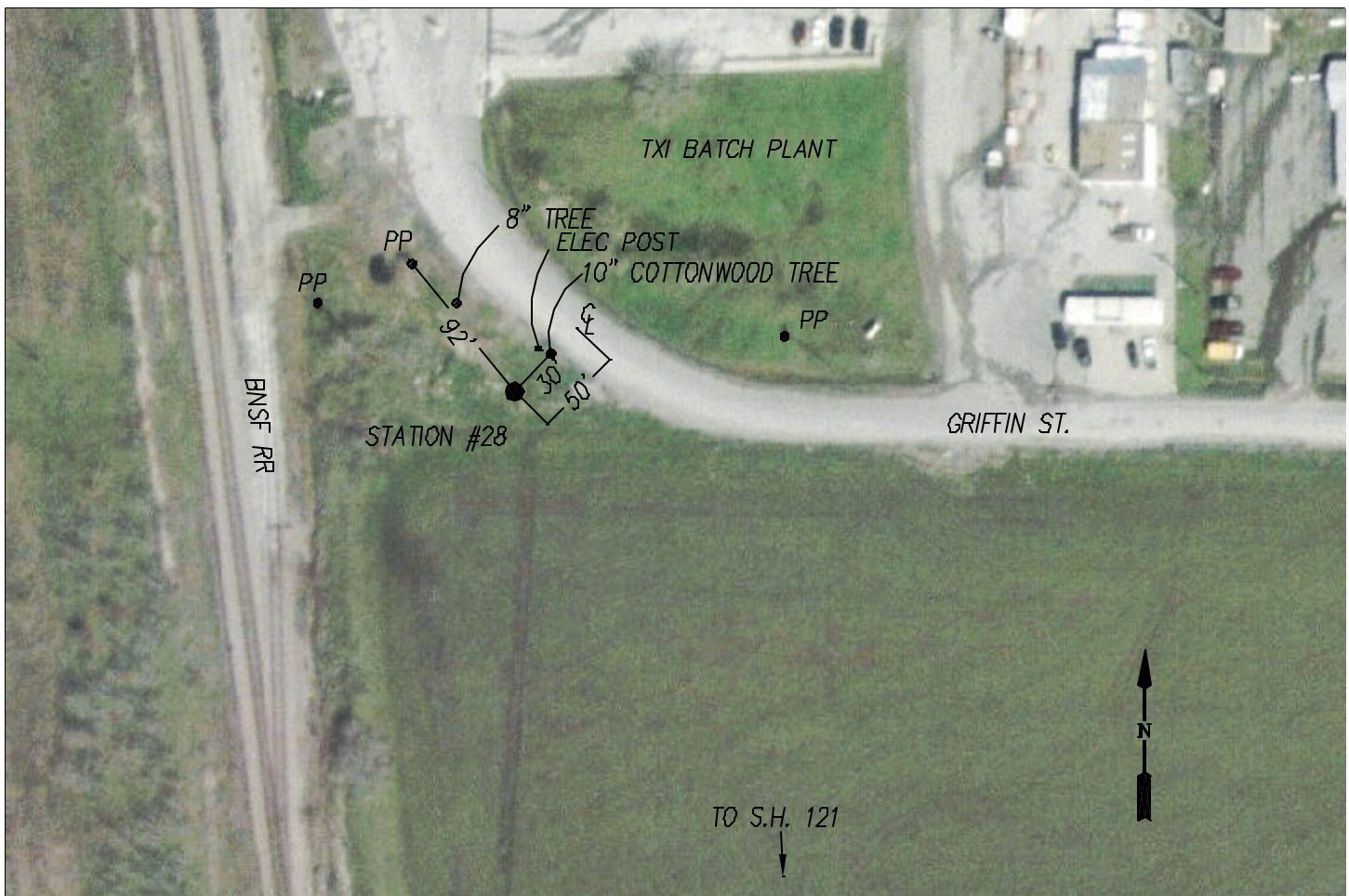
Note:  
Elevation revised as of 4/13/03


JOB NUMBER:  
34034-0020

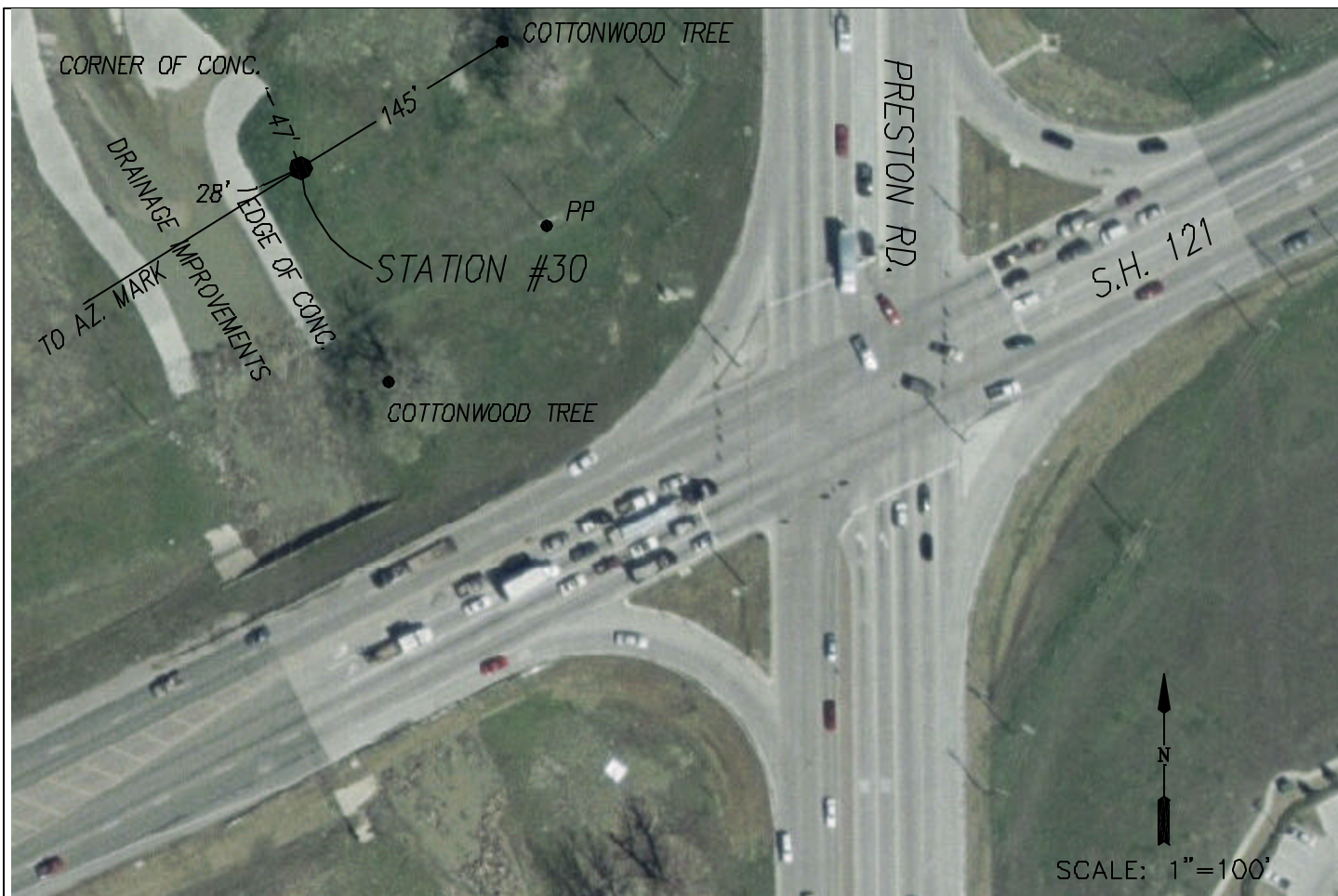
DATE:  
5/2002

SHEET 27 OF X





STATION NUMBER 28			
STATE PLANE COORDINATES NAD '83 TEXAS NORTH CENTRAL (GRID VALUES)		GEODETIC POSITION	
NORTH : 7081040.63 EAST : 2472179.22 ORTHO ELEV. : 623.36		LATITUDE : 33° 05' 00.3240" N LONGITUDE : 96° 51' 19.4715" W	
DESCRIPTION :			
Standard City of Frisco monument located between the BNSF Railroad and Griffin St. just north of S.H. 121, and in the entrance to the TXI Batch Plant. The monument is located 92' southeast of a power pole, 30' southwest of a cottonwood tree, and 50' southwest of the centerline of Griffin St.			
GRID AZIMUTH :		<div><div>CITY OF FRISCO, TEXAS</div><div>FRISCO</div></div>	
		DRAWN BY: MAS	APPROVED BY: JLL
		JOB NUMBER: 34034-0020	DATE: 5/2002
		SHEET 28 OF X	



STATION NUMBER 30

STATE PLANE COORDINATES NAD '83  
TEXAS NORTH CENTRAL  
(GRID VALUES)

NORTH : 7086383.76  
EAST : 2487066.14  
ORTHO ELEV. : 701.17

GEODETTIC POSITION

LATITUDE : 33° 05' 50.3477" N  
LONGITUDE : 96° 48' 23.4998" W

#### DESCRIPTION:

Standard City of Frisco monument located in the northwest quadrant of the intersection of S.H. 121 and Preston Rd. The monument is located 47' south of the corner of a concrete channel, 28' east of a edge of concrete channel, and 145' southwest of a cottonwood tree.

GRID AZIMUTH :

Grid azimuth to antenna on top of a rounded water tower, azimuth mark "J" from station #30: 237°59'03"

(see "Azimuth Mark Sketches" for details)



CITY OF FRISCO, TEXAS

DRAWN BY:  
MAS

APPROVED BY:  
JLL


JOB NUMBER:  
34034-0020

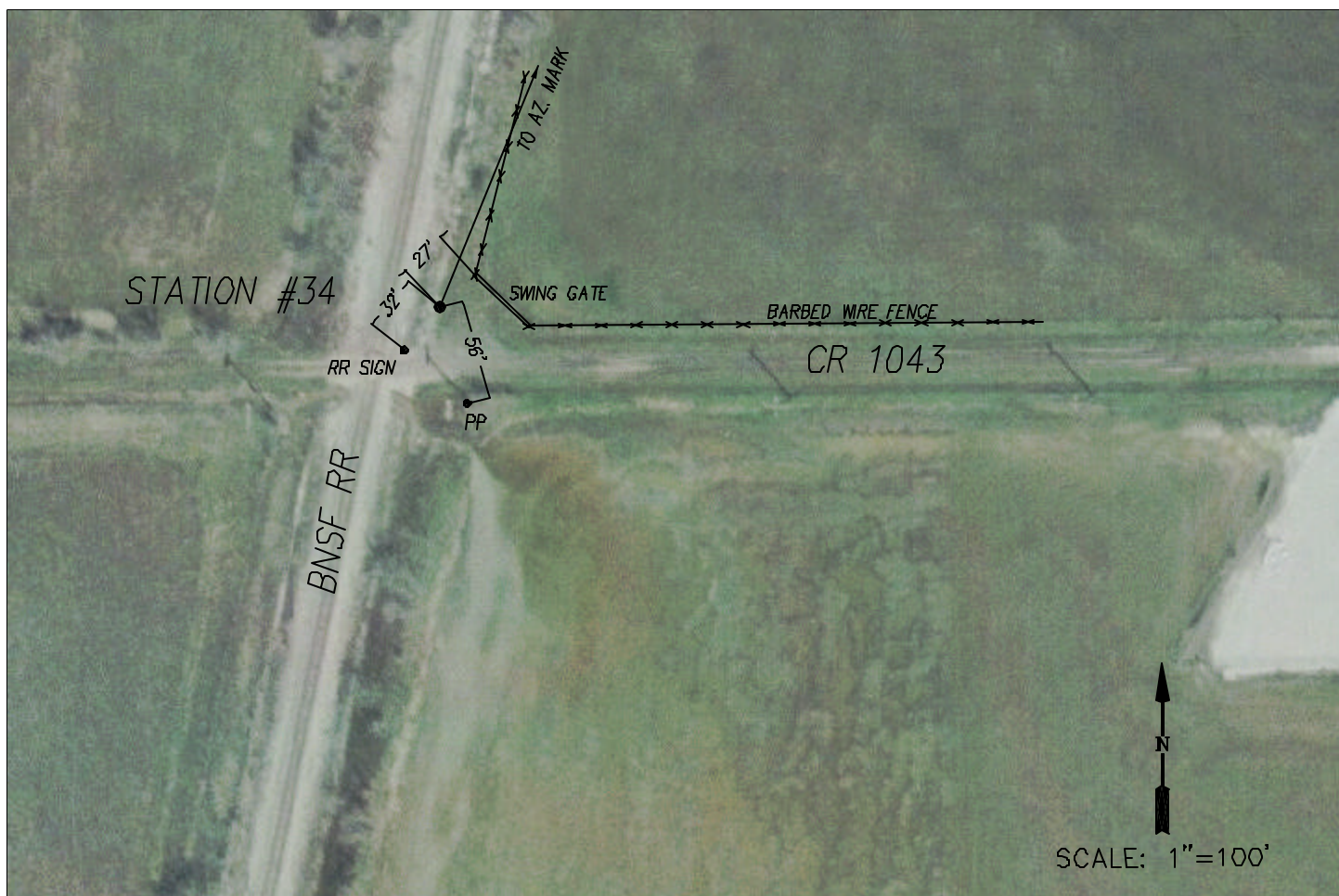
DATE:  
5/2002


SHEET 30 OF X





STATION NUMBER     31			
STATE PLANE COORDINATES NAD '83 TEXAS NORTH CENTRAL (GRID VALUES)		GEODETIC POSITION	
NORTH :    7089348.61		LATITUDE :    33° 06' 19.2919" N	
EAST :    2492611.30		LONGITUDE :    96° 47' 17.7520" W	
ORTHO ELEV. :    712.79			
DESCRIPTION :			
Standard City of Frisco monument located in the approximately 350' north of the intersection of S.H. 121 and Hillcrest Rd. in the center median of Hillcrest Rd. The monument is located 103' northwest of a power pole.			
GRID AZIMUTH :		 CITY OF FRISCO, TEXAS	
Grid azimuth to the top of the northernmost edge of a water tower, azimuth mark "F" from station #31: 284°49'58"			
(see "Azimuth Mark Sketches" for details)			
		DRAWN BY: MAS	
		APPROVED BY: JLL	
		JOB NUMBER: 34034-0020	
		DATE: 5/2002	
		SHEET 31 OF X	



STATION NUMBER     34											
STATE PLANE COORDINATES NAD '83 TEXAS NORTH CENTRAL (GRID VALUES)  NORTH :    7119827.13 EAST :    2482674.87 ORTHO ELEV. :    630.63		GEODETIC POSITION  LATITUDE :    33° 11' 22.4237" N LONGITUDE :    96° 49' 08.8264" W									
DESCRIPTION :  Standard City of Frisco monument on the northeast quadrant of the intersection of CR 1043 with the BNSF Railroad. The monument is located 27' southwest of the north end of a swing gate, 32' northeast of a railroad sign and 56' northwest of a power pole.											
GRID AZIMUTH :  Grid azimuth to rod projecting from the top of a water tower near power plant, azimuth mark "D": 22°10'32"  (see "Azimuth Mark Sketches" for details)		<div>CITY OF FRISCO, TEXAS</div> <table><tr><td colspan="2">DRAWN BY: MAS</td><td colspan="2">APPROVED BY: JLL</td></tr><tr><td colspan="2">JOB NUMBER: 34034-0020</td><td>DATE: 5/2002</td><td>SHEET 25 OF X</td></tr></table>		DRAWN BY: MAS		APPROVED BY: JLL		JOB NUMBER: 34034-0020		DATE: 5/2002	SHEET 25 OF X
DRAWN BY: MAS		APPROVED BY: JLL									
JOB NUMBER: 34034-0020		DATE: 5/2002	SHEET 25 OF X								





C263

STATE PLANE COORDINATES NAD '83  
TEXAS NORTH CENTRAL  
(GRID VALUES)

NORTH : 7105712.3  
EAST : 2479816.9  
ORTHO ELEV. : 651.83

GEODETC POSITION

LATITUDE : 33° 09' 03.22753" N  
LONGITUDE : 96° 49' 45.09699" W

# DESCRIPTION:

Standard USC&GS benchmark disc stamped 'C263+1934' located approximately 550' south of the intersection of F.M. 720 and the east spur of the BNSFRR. The monument is 13' west of the rail road, and is located on a 2'x2' abandoned water tower base pad.

GRID AZIMUTH :



CITY OF FRISCO, TEXAS

**FRISCO**

DRAWN BY:  
MAS

APPROVED BY:  
JLL

JOB NUMBER:  
34034-0020

DATE:  
5/2002

SHEET 3 OF X





TxDOT R0430026											
<p style="text-align: center;">STATE PLANE COORDINATES NAD '83 TEXAS NORTH CENTRAL (GRID VALUES)</p> <p>NORTH : 7129725.7 EAST : 2487565.8 ORTHO ELEV. : 663.7</p>		<p style="text-align: center;">GEODETTIC POSITION</p> <p>LATITUDE : 33° 12' 59.57768" N LONGITUDE : 96° 48' 09.39436" W</p>									
<p>DESCRIPTION:</p> <p>Standard City of Frisco monument located just south of the intersection of Preston Rd. and Hwy. 380. The monument is 3' west of the west curb of Preston Rd., and is located 80' north of a sign.</p>											
<p>AZIMUTH :</p>		<div style="display: flex; align-items: center; justify-content: space-between;"> <div> <p style="margin: 0;">CITY OF FRISCO, TEXAS</p> <p style="margin: 0;"><b>FRISCO</b></p> </div> </div> <table border="1" style="width: 100%; border-collapse: collapse; margin-top: 10px;"> <tr> <td colspan="2" style="padding: 2px;">DRAWN BY: MAS</td> <td colspan="2" style="padding: 2px;">APPROVED BY: JLL</td> </tr> <tr> <td style="padding: 2px;">JOB NUMBER: 34034-0020</td> <td style="padding: 2px;">DATE: 5/2002</td> <td colspan="2" style="padding: 2px;">SHEET 3 OF X</td> </tr> </table>		DRAWN BY: MAS		APPROVED BY: JLL		JOB NUMBER: 34034-0020	DATE: 5/2002	SHEET 3 OF X	
DRAWN BY: MAS		APPROVED BY: JLL									
JOB NUMBER: 34034-0020	DATE: 5/2002	SHEET 3 OF X									



# POE

STATE PLANE COORDINATES NAD '83  
TEXAS NORTH CENTRAL  
(GRID VALUES)

NORTH : 7105663.11  
EAST : 2459494.69  
ORTHO ELEV. : 581.45

GEODETTIC POSITION

LATITUDE : 33° 09' 05.87533" N  
LONGITUDE : 96° 53' 44.12927" W

## DESCRIPTION:

Standard USC&GS disc stamped 'POE 1935' located approximately .25 miles west of the intersection of F.M. 423, and Witt Rd. The monument is 34' north of Witt Rd., and approximately 31' north east of a power pole.

GRID AZIMUTH :



CITY OF FRISCO, TEXAS

DRAWN BY:  
MAS

APPROVED BY:  
JLL

JOB NUMBER:  
34034-0020

DATE:  
5/2002

SHEET 3 OF X



**HUNTER ASSOCIATES TEXAS, LTD.**

ENGINEERS/PLANNERS/SURVEYORS

8140 WALNUT HILL LANE  
ONE GLEN LAKES • SUITE 500  
DALLAS, TEXAS 75231-4350  
214/369-9171 • FAX 214/696-3795

PROJECT: FRISCO GPS

JOB NUMBER: 34034 DATE: 7-8-02

BY: R. DOAKE SHEET 1 OF     

*AZIMUTH MARK FOR #8 & #1*

*AZIMUTH MARK A*

*DOWNTOWN FRISCO  
WATER TOWER*



*SEVENTH ST.*

*ELM ST.*

*DIST. FROM 8 = 2.2 mi*

*DIST. FROM 1 = 0.2 mi*



HUNTER ASSOCIATES TEXAS, LTD.

ENGINEERS/PLANNERS/SURVEYORS

8140 WALNUT HILL LANE  
ONE GLEN LAKES • SUITE 500  
DALLAS, TEXAS 75231-4350  
214/369-9171 • FAX 214/696-3795

PROJECT: FRISCO GPS

JOB NUMBER: 34034

DATE: 7-8-02

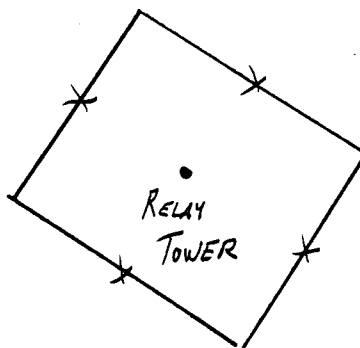
BY: R. DOAKE

SHEET 2 OF     

AZIMUTH MARK FOR #6 & #11

AZIMUTH MARK B

GRAVEL DRIVE



DIST. FROM 6 = 1.7mi

DIST. FROM 11 = 0.3mi

0.1 mi

Hwy. 720 & 423

Hwy. 720

Hwy 423



**HUNTER ASSOCIATES TEXAS, LTD.**

ENGINEERS/PLANNERS/SURVEYORS

8140 WALNUT HILL LANE  
ONE GLEN LAKES • SUITE 500  
DALLAS, TEXAS 75231-4350  
214/369-9171 • FAX 214/696-3795

PROJECT: FRISCO GPS

JOB NUMBER: 34034

DATE: 7-8-02

BY: R. DOAKE

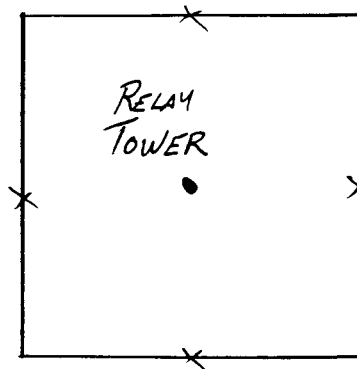
SHEET

3

OF

*AZIMUTH MARK FOR #24*

*AZIMUTH MARK C*



*DIST. FROM 24 = 1 mi*

*CR 24*

*0.15 mi*

*Hwy. 289 (PRESTON RD.)*





**HUNTER ASSOCIATES TEXAS, LTD.**  
ENGINEERS/PLANNERS/SURVEYORS

8140 WALNUT HILL LANE  
ONE GLEN LAKES • SUITE 500  
DALLAS, TEXAS 75231-4350  
214/369-9171 • FAX 214/696-3795

PROJECT: FRISCO GPS

JOB NUMBER: 34034

DATE: 7-8-02

BY: R. DOAKE

SHEET

4

OF

*AZIMUTH MARK FOR #34*

*AZIMUTH MARK D*

*BUSFRR*

*0.2mi*

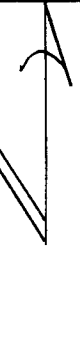
*CR 24*

*WATER TOWER  
(GREEN)*

*TXU  
POWER PLANT*

*0.2mi*

*DIST. FROM 34: 0.7mi*





**HUNTER ASSOCIATES TEXAS, LTD.**

ENGINEERS/PLANNERS/SURVEYORS

8140 WALNUT HILL LANE  
ONE GLEN LAKES • SUITE 500  
DALLAS, TEXAS 75231-4350  
214/369-9171 • FAX 214/696-3795

PROJECT: FRISCO GPS

JOB NUMBER: 34034 DATE: 7-8-02

BY: R. DOAKE SHEET 5 OF     

AZIMUTH MARK E  
AZIMUTH MARK FOR #5

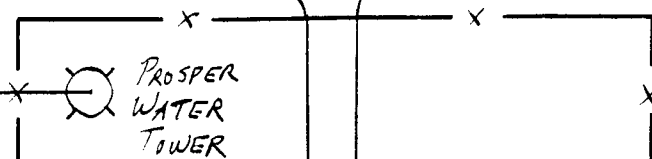


CR 77

DIST. FROM 5 = 3.1mi

CR 78

0.05mi





**HUNTER ASSOCIATES TEXAS, LTD.**

ENGINEERS/PLANNERS/SURVEYORS

8140 WALNUT HILL LANE  
ONE GLEN LAKES • SUITE 500  
DALLAS, TEXAS 75231-4350  
214/369-9171 • FAX 214/696-3795

PROJECT: FRISCO GPS

JOB NUMBER: 34034 DATE: 7-8-02

BY: R. DOAKE SHEET 6 OF     

AZIMUTH MARK F

AZIMUTH MARK FOR #3 & #31



FRISCO WATER  
TOWER

DIST. FROM 3 = 2.7 mi

DIST. FROM 31 = 1.5 mi

PARKWOOD

WARREN





**HUNTER ASSOCIATES TEXAS, LTD.**

ENGINEERS/PLANNERS/SURVEYORS

8140 WALNUT HILL LANE  
ONE GLEN LAKES • SUITE 500  
DALLAS, TEXAS 75231-4350  
214/369-9171 • FAX 214/696-3795

PROJECT: FRISCO GPS

JOB NUMBER: 34034 DATE: 7-8-02

BY: R. DOAKE SHEET 7 OF     

AZIMUTH MARK G

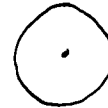
Azm 15



ELDORADO

ALMA

McKINNEY WATER  
TOWER



DIST. FROM IS = 1.5 mi



**HUNTER ASSOCIATES TEXAS, LTD.**

ENGINEERS/PLANNERS/SURVEYORS

8140 WALNUT HILL LANE  
ONE GLEN LAKES • SUITE 500  
DALLAS, TEXAS 75231-4350  
214/369-9171 • FAX 214/696-3795

PROJECT: FRISCO GPS

JOB NUMBER: 34034 DATE: 7-8-02

BY: R. DOAKE SHEET 8 OF     

AZIMUTH MARK H

ARM 14



CLUSTER

RAVENHURST



ALLEN WATER  
TOWER

DIST. FROM 14 = 2.9 mi



**HUNTER ASSOCIATES TEXAS, LTD.**

ENGINEERS/PLANNERS/SURVEYORS

8140 WALNUT HILL LANE  
ONE GLEN LAKES • SUITE 500  
DALLAS, TEXAS 75231-4350  
214/369-9171 • FAX 214/696-3795

PROJECT: FRISCO GPS

JOB NUMBER: 34034

DATE: 7-8-02

BY: R. DOAKE

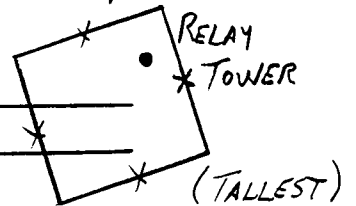
SHEET 9 OF     

AZIMUTH MARK I

AZM 16

ALMA

DIST. FROM 16 = 2.4mi







**HUNTER ASSOCIATES TEXAS, LTD.**

ENGINEERS/PLANNERS/SURVEYORS

8140 WALNUT HILL LANE  
ONE GLEN LAKES • SUITE 500  
DALLAS, TEXAS 75231-4350  
214/369-9171 • FAX 214/696-3795

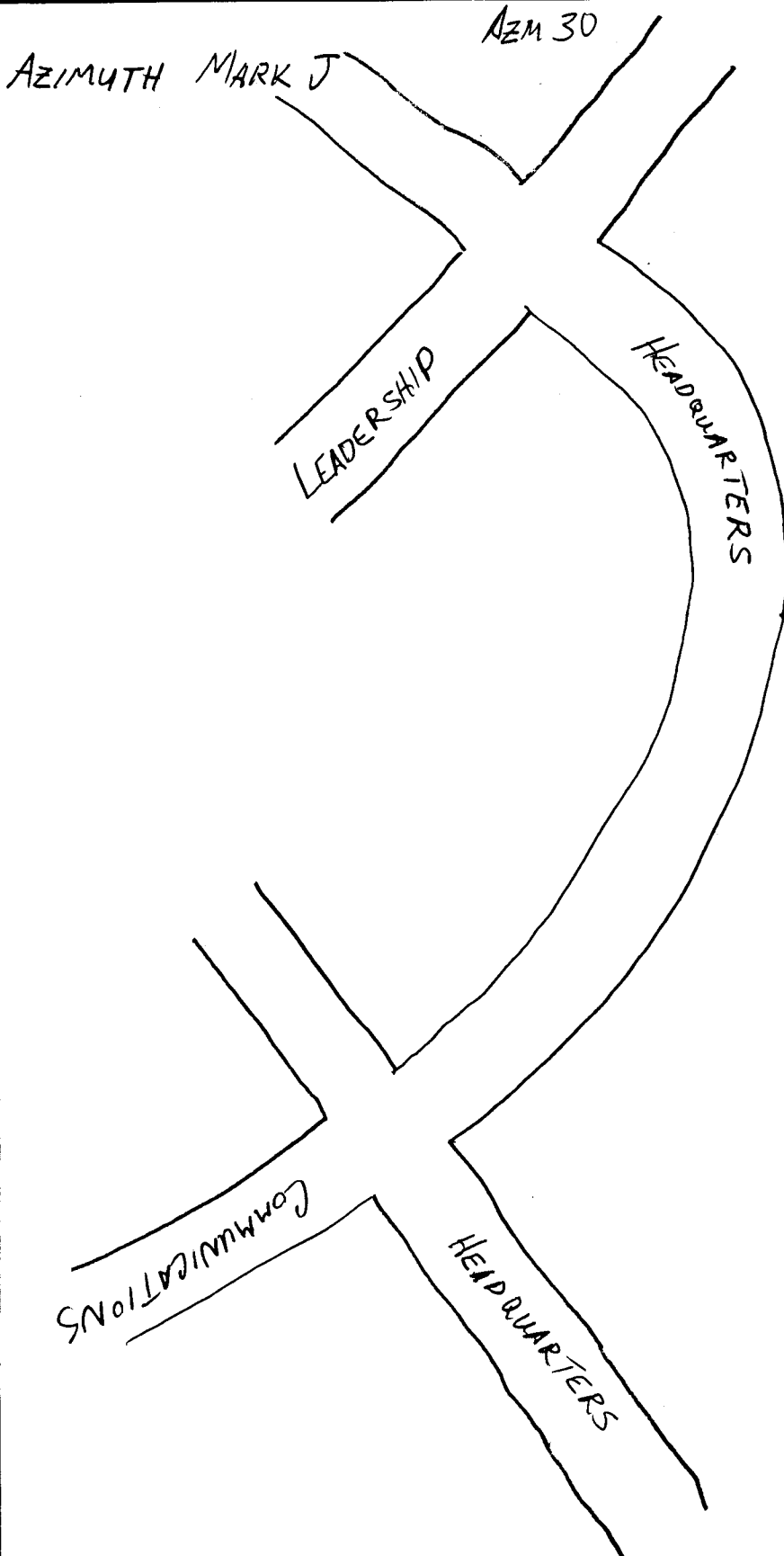
PROJECT: FRISCO GPS

JOB NUMBER: 34034

DATE: 7-8-02

BY: R. DOAKE

SHEET 10 OF     



PLANO WATER  
TOWER

DIST. FROM 30 = 1.6mi



**HUNTER ASSOCIATES TEXAS, LTD.**

ENGINEERS/PLANNERS/SURVEYORS

8140 WALNUT HILL LANE  
ONE GLEN LAKES • SUITE 500  
DALLAS, TEXAS 75231-4350  
214/369-9171 • FAX 214/696-3795

PROJECT: FRISCO GPS

JOB NUMBER: 34034

DATE: 7-8-02

BY: R. DOAKE

SHEET 11 OF     

AZM 23

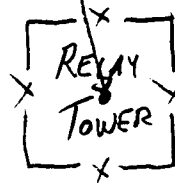
AZIMUTH MARK K



0.8 mi To INT.  
Hwy. 423 & LEBANON

KRUGER LN.

0.25 mi



DIRT ROAD

LAKE  
LEWISVILLE

DIST. FROM 23 = 3 mi

LAKE  
LEWISVILLE